



\*Please note that some of our lunches may contain gluten, dairy, soy, eggs, artificial colors, or other allergy triggers.

AUGUST 2025

# ALBUQUERQUE CHRISTIAN SCHOOL



Your cafeteria is managed by  
Canteen of Central New Mexico

MONDAY

TUESDAY

WEDNESDAY

THURSDAY

1

4

5

6

7

8

11

12

13

BREAKFAST BURRITO

*CHICKEN TACO SOFT*  
PINTO BEANS  
MANGOS

14

BREAKFAST PIZZA

*LASAGNA BOWTIE*  
MIXED VEGETABLES  
PEACHES  
BREADSTICK

15

MUFFIN TRIX

*SALISBURY STEAK*  
WHIPPED POTATOES  
BLUEBERRIES FRESH  
BISCUIT

18 MUFFINS CINNAMON TAOST  
CRUNCH/ JUICE

*PIZZA*  
CARROTS  
STRAWBERRIES

19 CREAM OF WHEAT APPLE &  
BWN SUGAR

*CHICKEN PARMESAN*  
MIXED VEGETABLES  
PINEAPPLE  
DINNER ROLL

20 BREAKFAST BURRITO

*FRITO PIE*  
CORN  
MANGOS  
TORTILLA

21 BREAKFAST COMBO BAR  
WRAP

*ORANGE CHICKEN*  
BROCCOLI  
PEACHES  
BISCUIT

22 BAGEL PLAIN  
CREAM CHEESE

*GRILLED CHEESE SANDWICH*  
BAKED BEANS  
BLUEBERRIES

25 COLD CEREAL & JUICE

*FRENCH TOAST STICKS*  
SAUSAGE PATTIE  
TATER TOTS  
STRAWBERRIES

26 OATMEAL

*MACARONI AND BEEF CASSEROLE*  
MIXED VEGETABLES  
PINEAPPLE  
DINNER ROLL

27 BREAKFAST BURRITO

*BBQ CHICKEN ON A BUN*  
BAKED BEANS  
MANGOS

28 BREAKFAST CHORIZO  
COMBO BAR

*BEAN & CHEESE BURRITO*  
BROCCOLI  
PEACHES

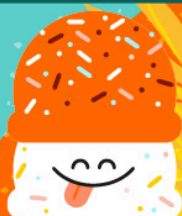
29 MUFFINS CINNAMON TAOST  
CRUNCH

*COUNTRY FRIED STEAK*  
COUNTRY GRAVY  
CARROTS  
BLUEBERRIES  
DINNER ROLL

\*Please note that some of our lunches may contain gluten, dairy, soy, eggs, artificial colors, or other allergy triggers.

*\*Please note that some of our lunches may contain gluten, dairy, soy, eggs, artificial colors, or other allergy triggers.*

--	--	--	--	--



--

--

--

--

--

--

--

--

--

--

--

--

--

--

--

--

--

--

--

--

--